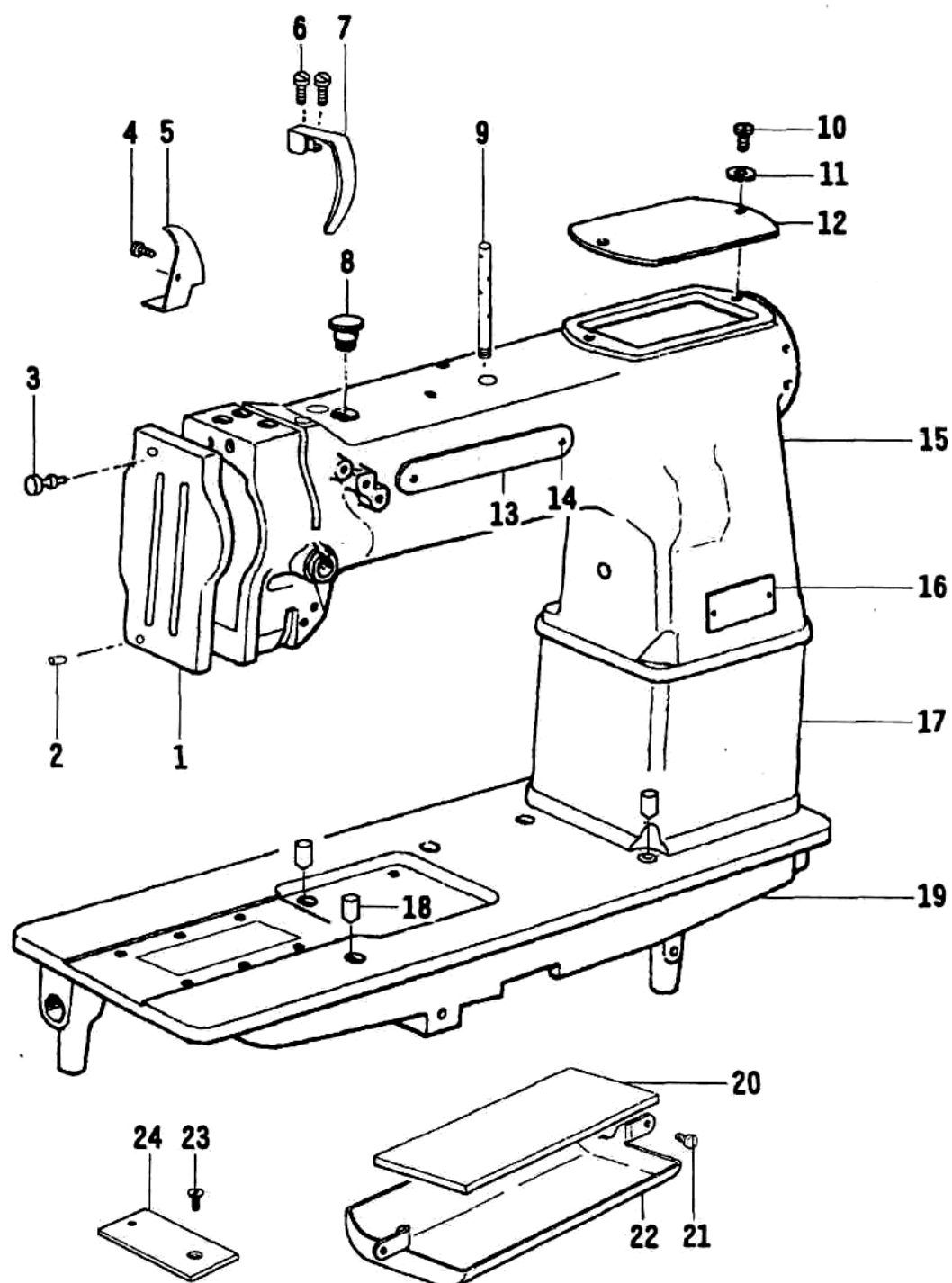
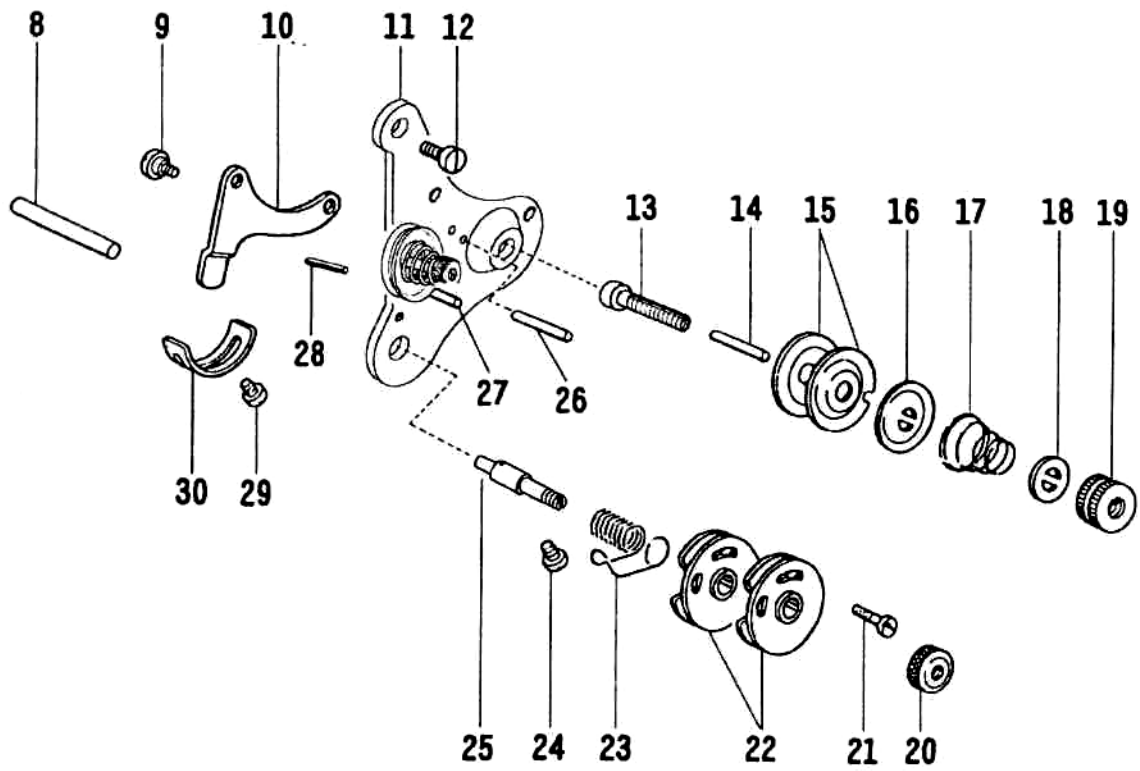
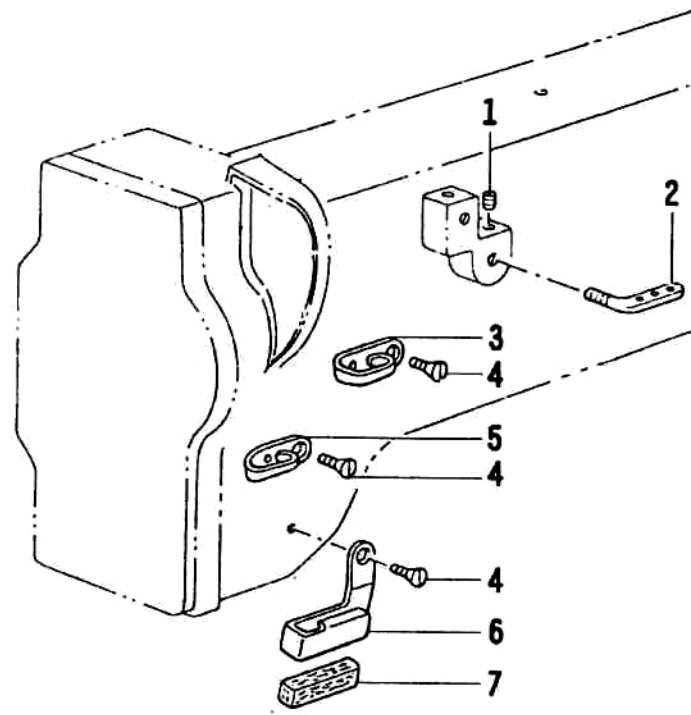


1



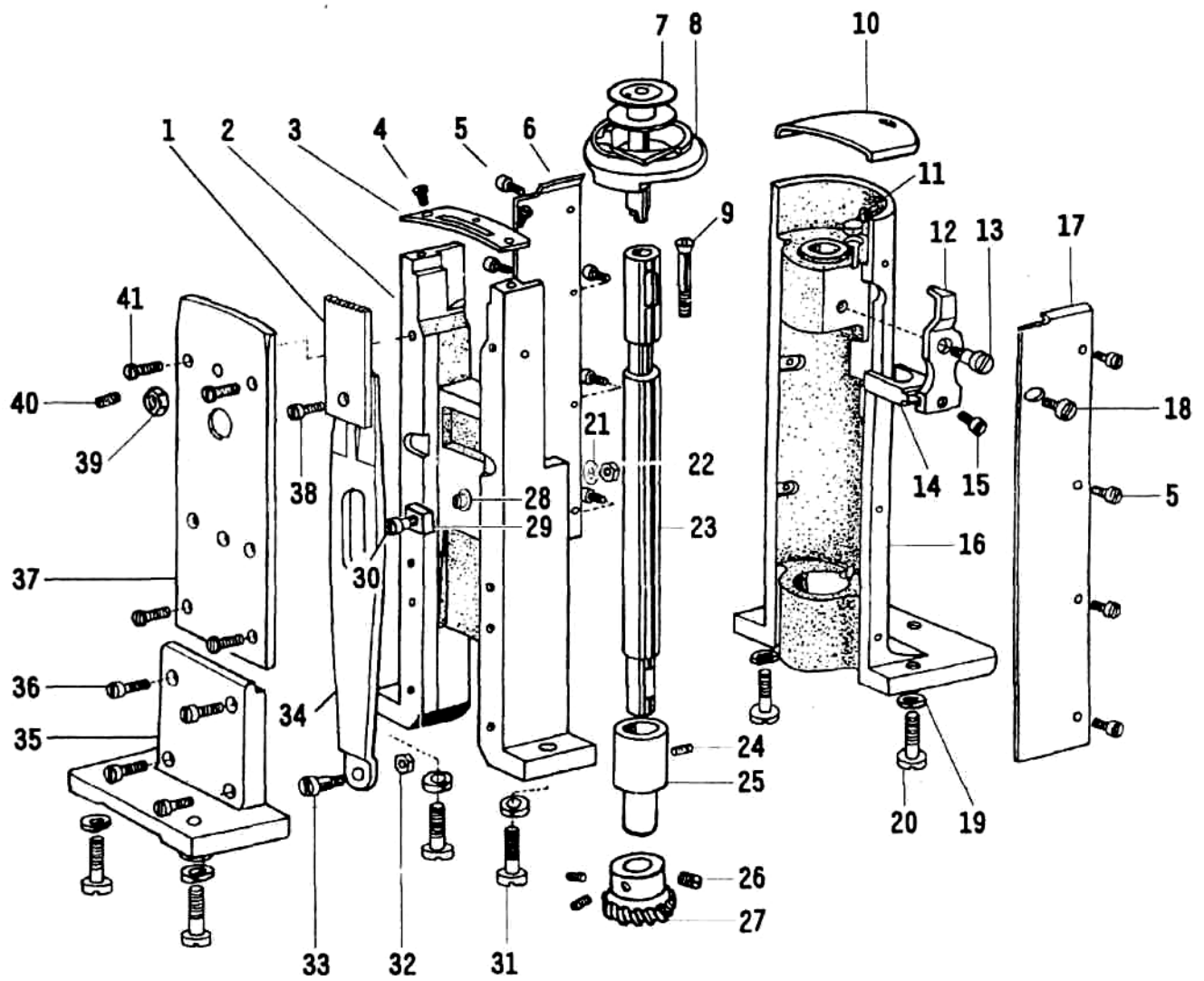
1. Arm

NO.	Name	Quantity		Note
		Single needle	Twin needle	
1	Face plate	1	1	
2	Face plate position pin	1	1	
3	Face plate screw	1	1	
4	Screw	1	1	
5	Oil shield plate	1	1	
6	Screw	2	2	
7	Thread take-up lever guard	1	1	
8	Rubber plug	1	1	
9	Thread guide bar	1		
	Thread guide bar		1	
10	Screw	1	1	
11	Washer	1	1	
12	Upper cover	1	1	
13	Model plate	1	1	
14	Nail	4	4	
15	Arm	1	1	
16	Trade mark	1		
	Trade mark		1	
17	Connector	1	1	
18	Oil cup	3	3	
19	Bed	1	1	
20	Oil felt	1	1	
21	Screw	2	2	
22	Small oil reservoir	1	1	
23	Screw	1	1	
24	Cover	1	1	



2. Thread tension

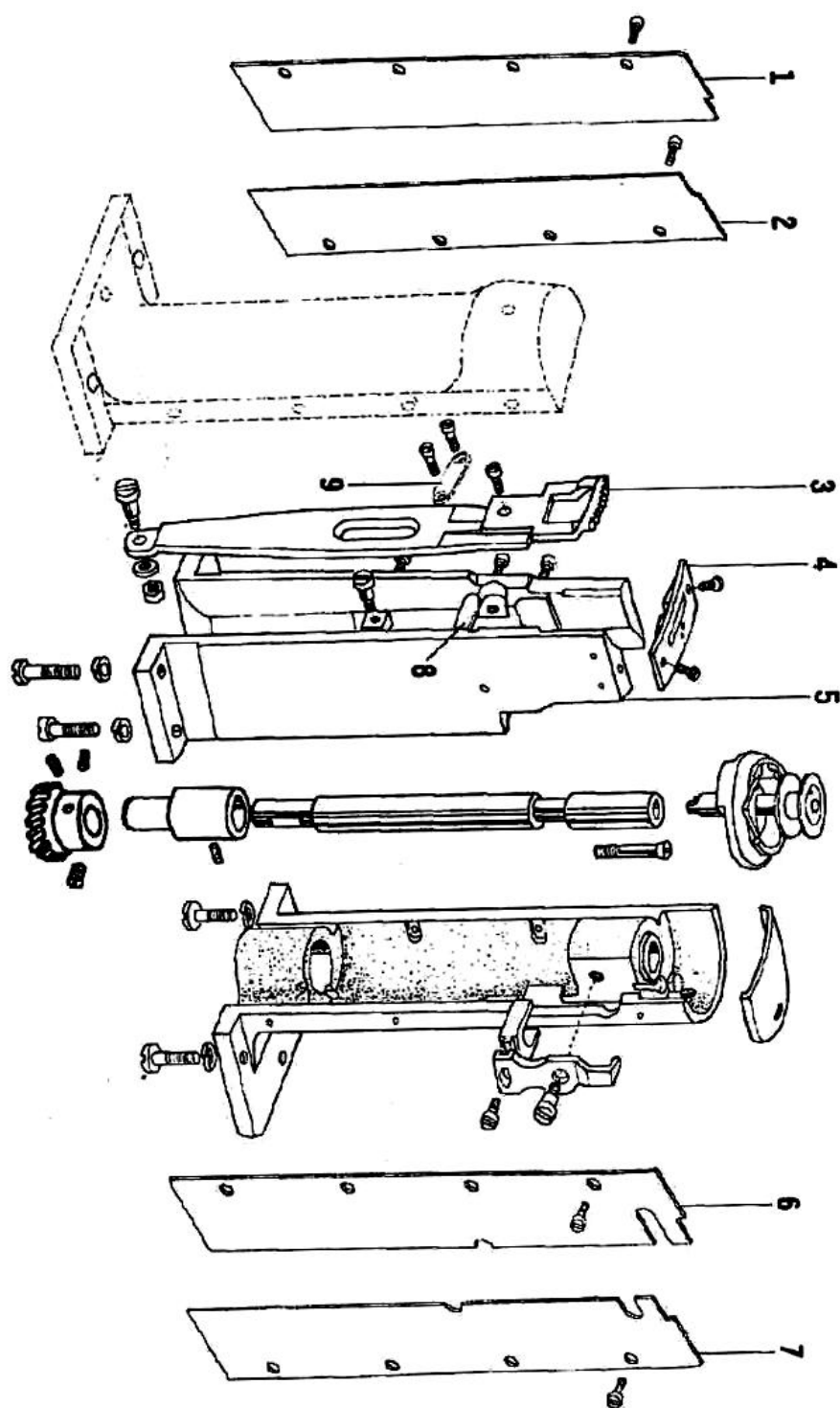
NO.	Name	Quantity		Note
		Single needle	Twin needle	
1	Screw	1	2	
2	Three hold thread guide	1	2	
3	Thread guide (upper)	1	1	
4	Screw	3	3	
5	Thread guide (middle)	1		
	Thread guide(middle)		1	
6	Thread guide (lower)	1		
	Thread guide(lower)		1	
7	Oil felt	1	1	
8	Thread release lever rob	1	1	
9	Screw	2	2	
10	Thread release lever	1	1	
11	Tension plate	1		
	Tension plate		1	
12	Screw	1	1	
13	Screw	1	2	
14	Thread tension release pin (short)		1	
15	Thread tension disc	2	4	
16	Thread release disc	1	2	
17	Spring	1	2	
18	Stop disc	1	2	
19	Nut	1	2	
20	Nut	1	1	
21	Screw	1		
	Screw		1	
22	Thread check disc complete	1	2	
23	Thread take-up spring	1		
	Thread take-up spring		1	
24	Screw	1	1	
25	Thread take-up spring pin	1		
	Thread take-up spring pin		1	
26	Thread separator pin(long)	1	1	
27	Thread separator pin(short)	1	1	
28	Thread release pin(long)	1	1	
29	Screw	1	1	
30	Position plate	1	1	



3. Post bed

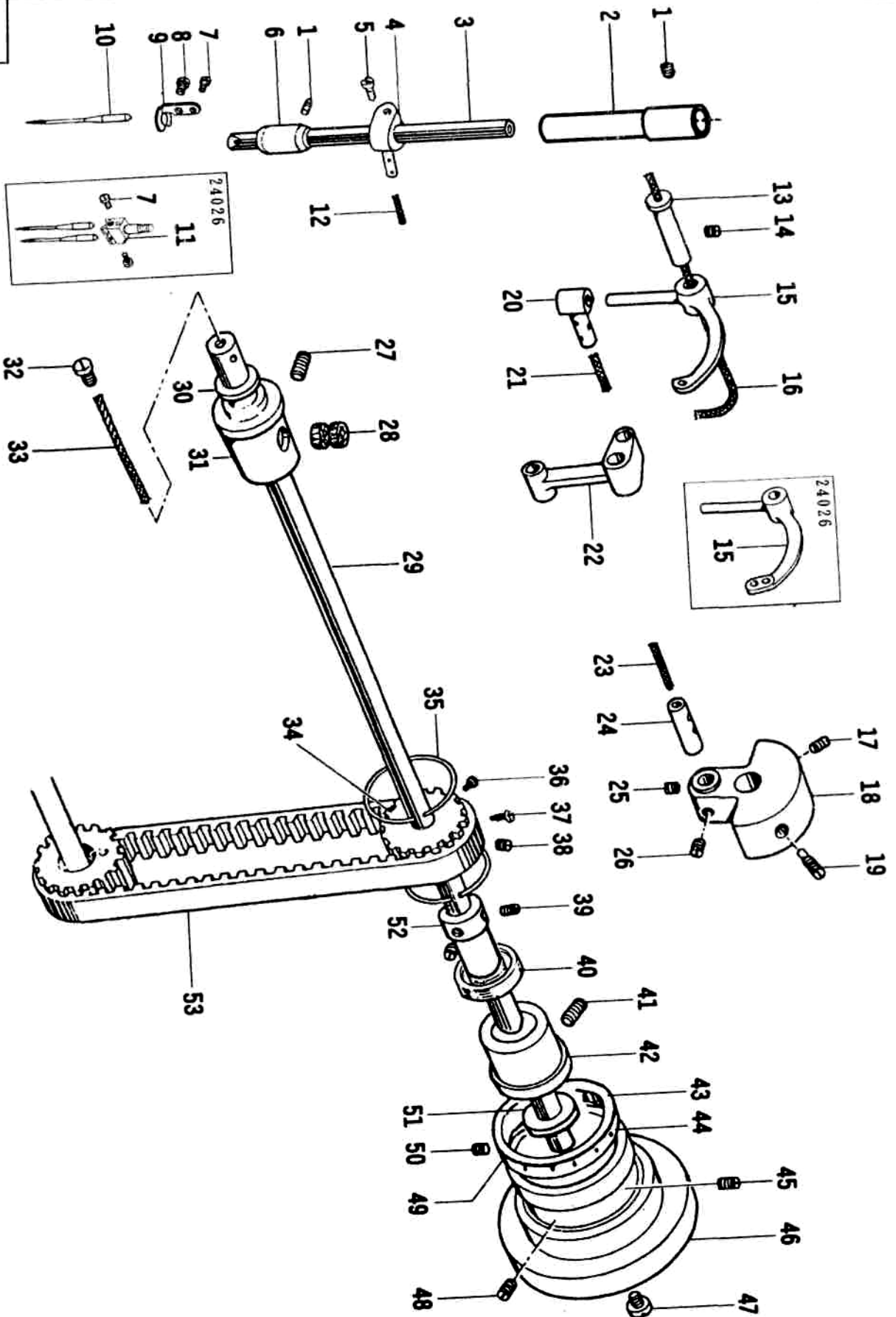
NO.	Name	Quantity		Note
		Single needle	Twin needle	
1	Feed dog	1		
	Feed dog		1	
2	Post-bed for feed	1		
	Post-bed for feed		1	
3	Needle plate	1		
	Needle plate		1	
4	Screw	2	2	
5	Screw	8	16	
6	Back cover	1		
7	Bobbin	1	2	
8	Rotating hook	1		
	Rotating hook		2	
9	Screw	1	2	
10	Slide plate	1	2	
11	Oil felt	1	2	
12	Thread separator	1	2	
13	Screw	1	2	
14	Thread separator bracket	1	2	
15	Screw	1	2	
16	Post-bed for hook shaft	1	2	
17	Front cover	1		
18	Screw	1	3	
19	Washer	1	8	
20	Screw	4	4	
21	Washer	1	1	
22	Nut	1	2	
23	Rotating hook shaft	1	2	
24	Screw	1	2	
25	Bushing	1	2	
26	Screw	3	6	
27	Gear	1	2	
28	Feed plate slide shaft	1	1	
29	Slide block	1	2	
30	Screw	1	2	
31	Screw	2	4	
32	Nut	1	2	
33	Screw	1	2	
34	Feed plate	1	2	
35	Support block	1		
36	Screw	4		
37	Presser plate	1		
38	Screw	1		
39	Nut	1		
40	Screw	1		
41	Screw	4		

4



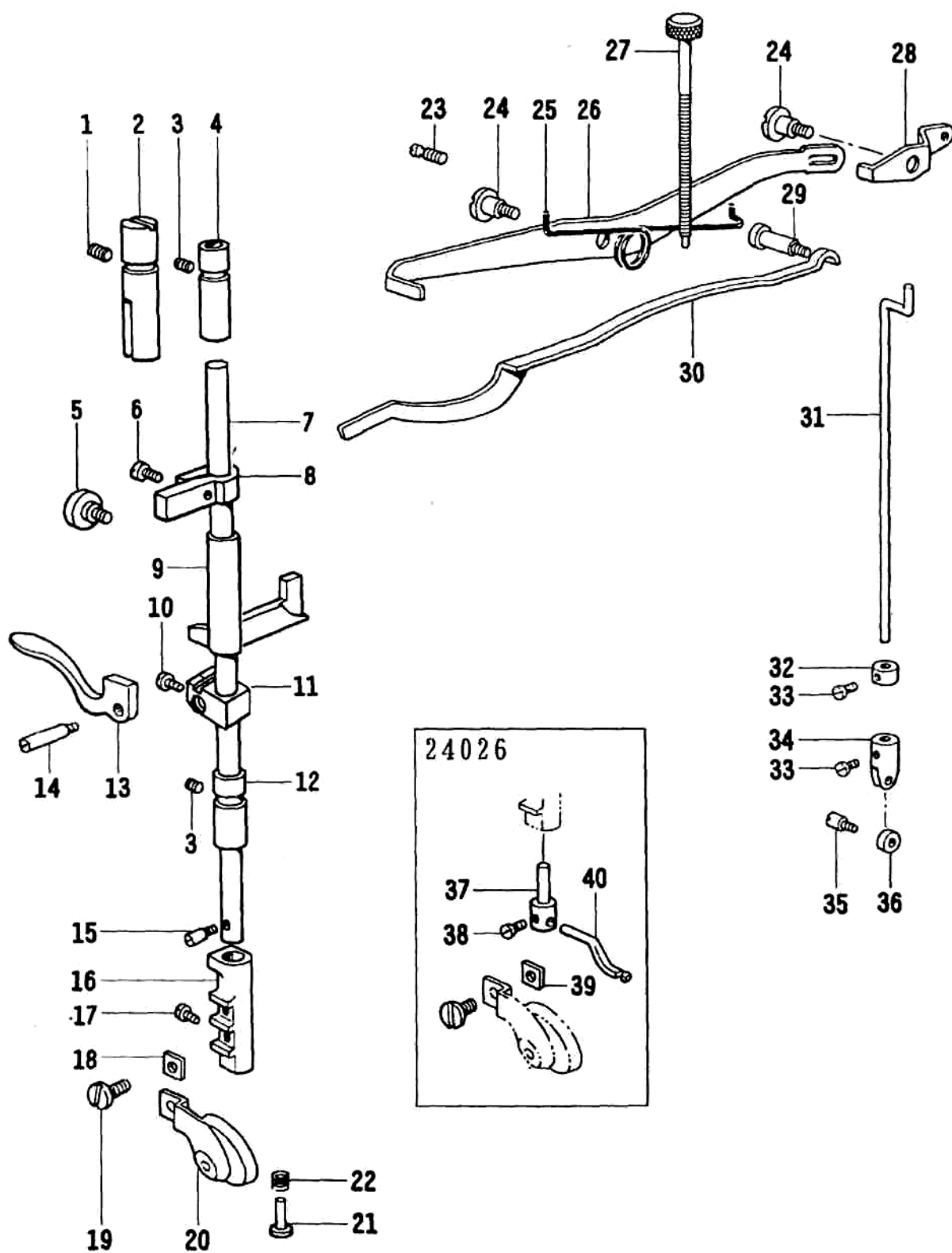
4. Post bed for twin needle

NO.	Name	Quantity		Note
		Single needle	Twin needle	
1	Back cover(left)		1	
2	Back cover(right)		1	
3	Feed dog		1	
4	Needle plate		1	
5	Post bed		1	
6	Front cover(left)		1	
7	Front cover(right)		1	
8	Oil felt		1	
9	Presser plate		1	



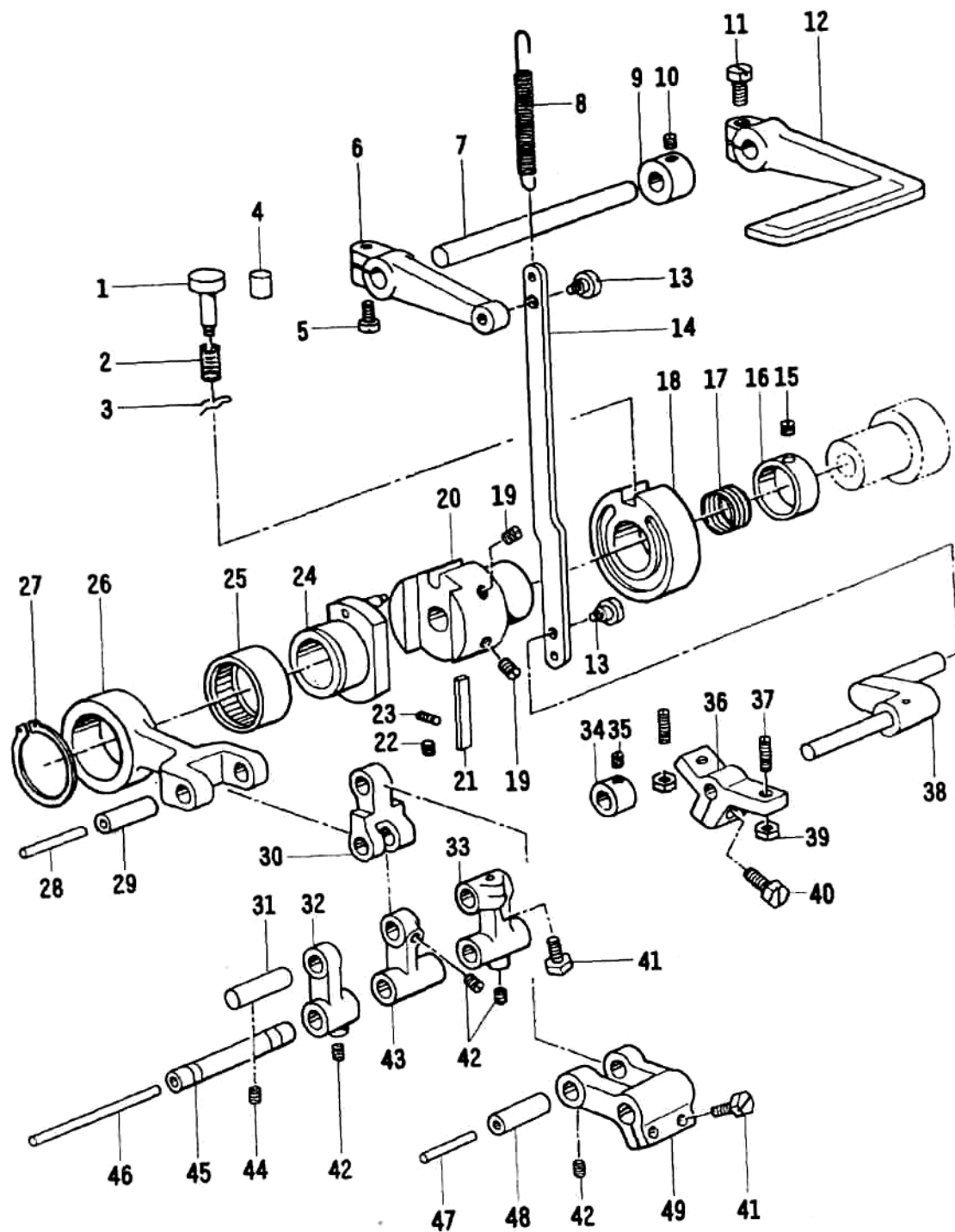
5. Upper shaft and needle thread take-up

NO.	Name	Quantity		Note
		Single needle	Twin needle	
1	Screw	2	2	
2	Bushing(upper)	1	1	
3	Needle bar	1		
	Needle bar		1	
4	Needle bar adaptor	1	1	
5	Screw	1	1	
6	Bushing(lower)	1	1	
7	Screw	1		
	Screw		2	
8	Screw	1	1	
9	Needle bar thread guide	1	1	
10	Needle	1	2	
11	Needle holder		1	
12	Felt	1	1	
13	Pin	1	1	
14	Screw	1	1	
15	Tread take-up lever	1		
	Tread take-up lever		1	
16	Oil wick	1	1	
17	Screw	1	1	
18	Needle bar crank	1	1	
19	Screw	1	1	
20	Slide block	1	1	
21	Wick	1	1	
22	Needle bar link	1	1	
23	Oil wick	1	1	
24	Pin for needle bar crank	1	1	
25	Screw	1	1	
26	Screw	1	1	
27	Screw	1	1	
28	Oil felt	2	2	
29	Upper shaft	1	1	
30	Washer	1	1	
31	Front bushing	1	1	
32	Screw	1	1	
33	Oil wick	1	1	
34	Synchronized pulley	1	1	
35	SD ring	2	2	
36	Screw	1	1	
37	Screw(long)	1	1	
38	Screw(short)	1	1	
39	Screw	2	2	
40	Bearing	1	1	
41	Screw	1	1	
42	Rear bushing	1	1	
43	Stitch length ring	1	1	
44	Stitch length ring belt	1	1	
45	Screw	1	1	
46	Balance wheel	1	1	
47	Screw	1	1	
48	Screw	1	1	
49	Nail	3	3	
50	Screw	1	1	
51	Retaining ring	1	1	
52	Bushing	1	1	
53	Synchronous belt	1	1	



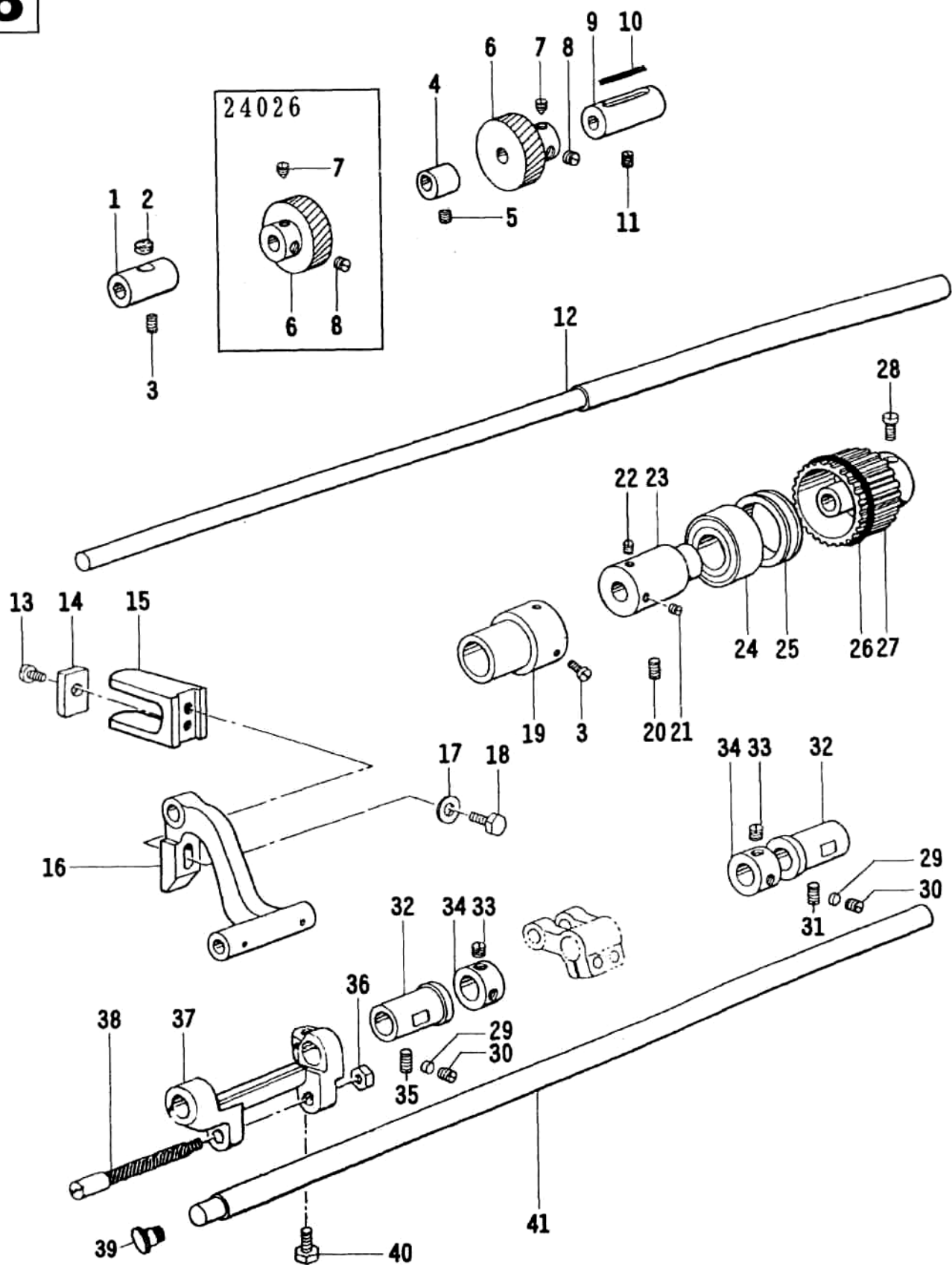
6. Presser foot lifter

NO.	Name	Quantity		Note
		Single needle	Twin needle	
1	Screw	3	3	
2	Position guide	1	1	
3	Screw	2	2	
4	Bushing(upper)	1	1	
5	Screw	1	1	
6	Screw	1	1	
7	Presser bar	1	1	
8	Position guide bracket	1	1	
9	Bushing	1	1	
10	Screw	1	1	
11	Spring bracket	1	1	
12	Bushing(lower)	1	1	
13	Presser bar lifer	1	1	
14	Presser bar lifer shaft	1	1	
15	Position pin	1	1	
16	Bushing	1	1	
17	Screw	2	2	
18	Washer	1	1	
19	Screw	1	1	
20	Roller complete	1	1	
21	Spring pin	1		
22	Spring	1		
23	Screw	1	1	
24	Screw	2	2	
25	Spring	1	1	
26	Knee lifting lever	1	1	
27	Screw	1	1	
28	Knee lifting crank	1	1	
29	Screw	1	1	
30	Presser bar spring plate	1	1	
31	Lifting lever connecting rod	1	1	
32	Bushing	1	1	
33	Screw	1	1	
34	Lifting lever connecting rod joint	1	1	
35	Screw	1	1	
36	Slide wheel	1	1	
37	Support		1	
38	Screw		1	
39	Washer		1	
40	Presser foot		1	



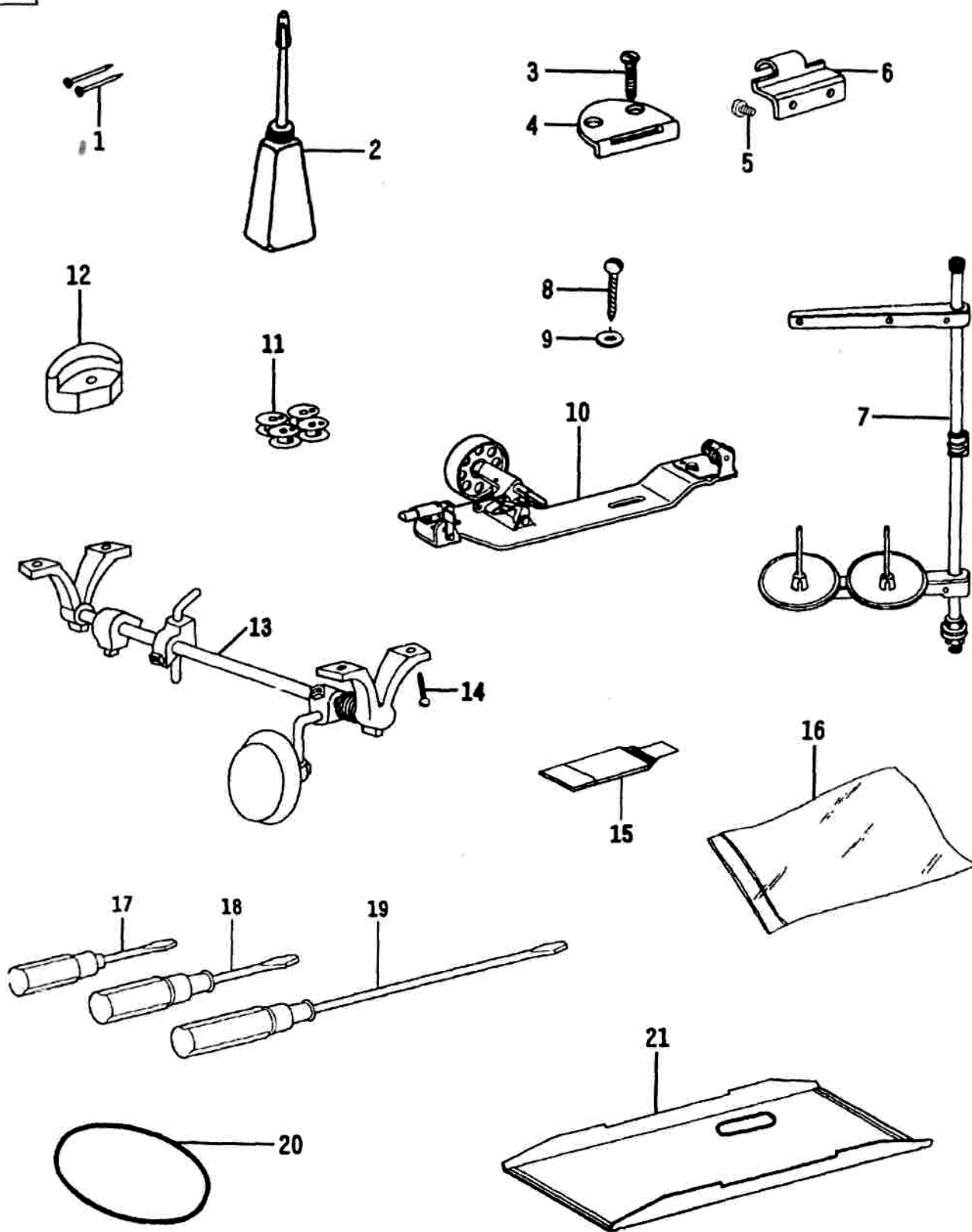
7. Reverse feed

NO.	Name	Quantity		Note
		Single needle	Twin needle	
1	Button	1	1	
2	Spring	1	1	
3	Spring clamp	1	1	
4	Rubber plug	2	2	
5	Screw	1	1	
6	Crank	1	1	
7	Reverse feed shaft	1	1	
8	Spring	1	1	
9	Ring	1	1	
10	Screw	1	1	
11	Screw	1	1	
12	Reverse feed lever	1	1	
13	Screw	2	2	
14	Reverse feed link	1	1	
15	Screw	2	2	
16	Collar	1	1	
17	Spring	1	1	
18	Eccentric adjusting dial	1	1	
19	Screw	2	2	
20	Adjusting block	1	1	
21	Adjusting slice	1	1	
22	Screw	2	2	
23	Screw	2	2	
24	Feed cam	1	1	
25	Bearing	1	1	
26	Forked link	1	1	
27	Ring	1	1	
28	Oil wick	1	1	
29	Connecting pin	1	1	
30	Forked link	1	1	
31	Pin(left)	1	1	
32	Link(left)	1	1	
33	Link(right)	1	1	
34	Collar	1	1	
35	Screw	2	2	
36	Crank	1	1	
37	Screw	2	2	
38	Shaft	1	1	
39	Nut	2	2	
40	Screw	1	1	
41	Screw	1	1	
42	Screw	3	3	
43	Link(middle)	1	1	
44	Screw	1	1	
45	Pin	1	1	
46	Oil wick	1	1	
47	Oil wick	1	1	
48	Connecting pin	1	1	
49	Crank	1	1	



8. Lower shaft

NO.	Name	Quantity		Note
		Single needle	Twin needle	
1	Bushing(front)	1	1	
2	Oil felt	1	1	
3	Screw	2	2	
4	Lifting cam	1	1	
5	Screw	1	1	
6	Gear	1	2	
7	Screw	1	2	
8	Screw	1	2	
9	Bushing(middle)	1	1	
10	Oil wick	1	1	
11	Screw	1	1	
12	Lower shaft	1	1	
13	Screw	1	1	
14	Oil felt	1	1	
15	Fork	1	1	
16	Feed dog bracket	1	1	
17	Washer	1	1	
18	Screw	3	3	
19	Bushing(rear)	1	1	
20	Screw	3	3	
21	Screw	1	1	
22	Screw	1	1	
23	Bushing	1	1	
24	Bearing	1	1	
25	Ring	1	1	
26	Retainer	2	2	
27	Synchronized pulley	1	1	
28	Screw	2	2	
29	Block	2	2	
30	Screw	2	2	
31	Screw	1	1	
32	Bushing	2	2	
33	Screw	4	4	
34	Collar	2	2	
35	Screw	1	1	
36	Nut	1	1	
37	Feed crank	1	1	
38	Shaft	1	1	
39	Rubber plug	2	2	
40	Screw	1	1	
41	Feed shaft	1	1	



9. Accessory

NO.	Name	Quantity		Note
		Single needle	Twin needle	
1	Nail	8	8	
2	Oil pot	1	1	
3	Screw(1)	4	4	
4	Hinge(1)	2	2	
5	Screw(2)	4	4	
6	Hinge(2)	2	2	
7	Thread holder	1		
	Thread holder		1	
8	Wooden screw	2	2	
9	Washer	2	2	
10	Thread winder	1	1	
11	Bobbin	4	8	
12	Cushion	4	4	
13	Knee lifter complete	1	1	
14	Wooden screw	4	4	
15	Needle	1	1	
16	Parts bag	1	1	
17	Screwdriver(small)	1	1	
18	Screwdriver	1	1	
19	Screwdriver(big)	1	1	
20	Belt	1	1	
21	Oil reservoir	1	1	