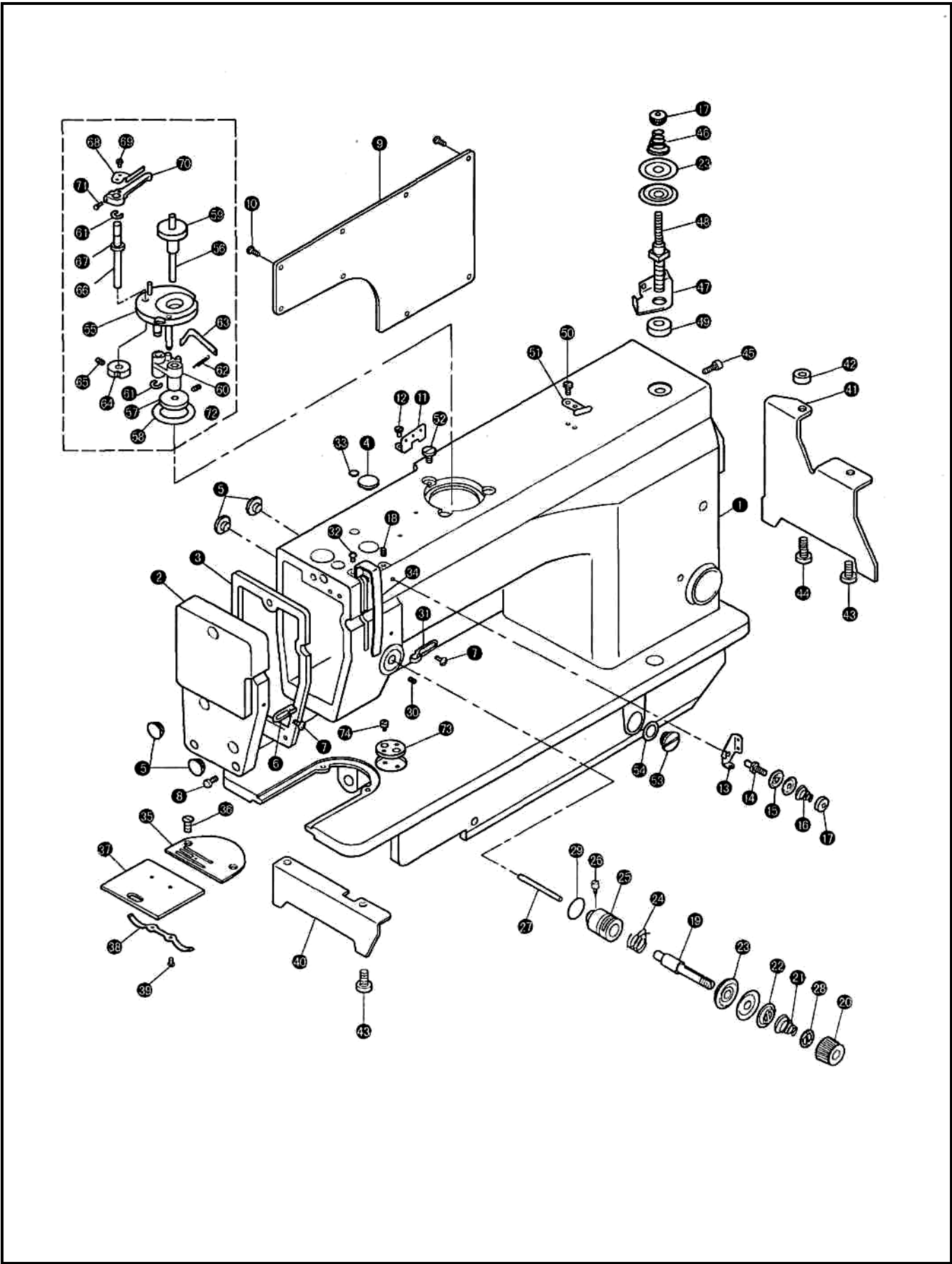
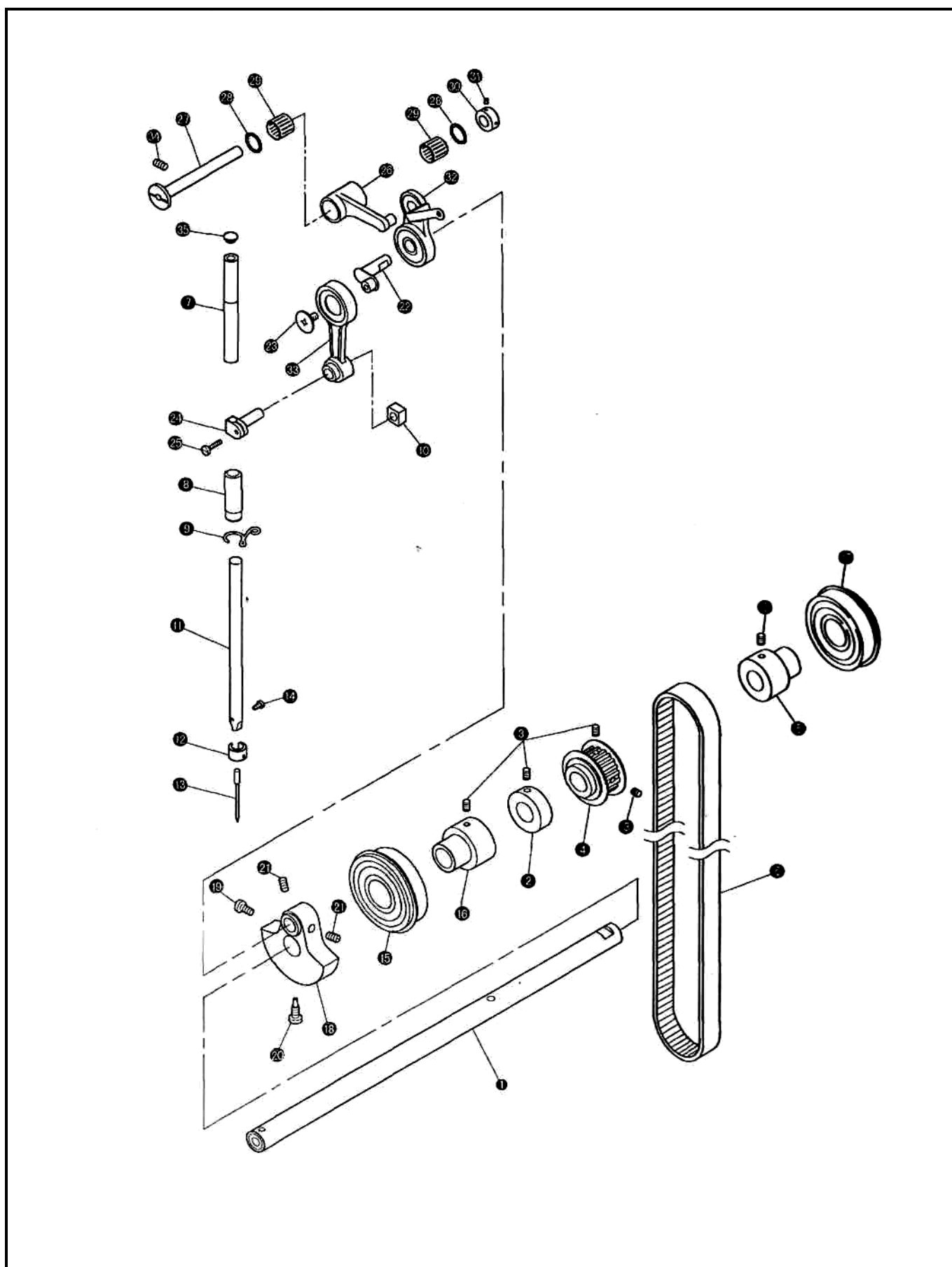


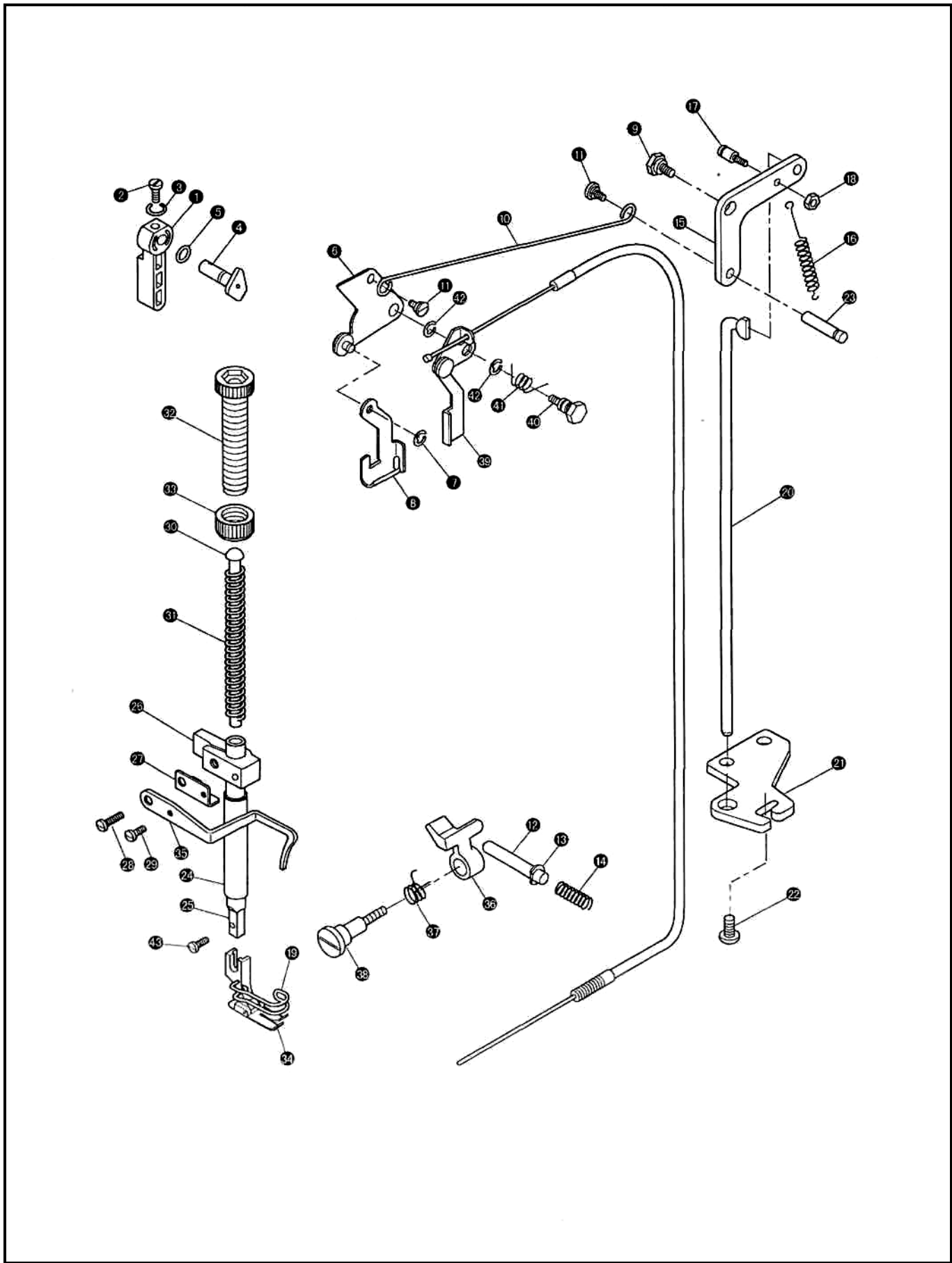
1. ARM BED AND ITS ACCESSORIES



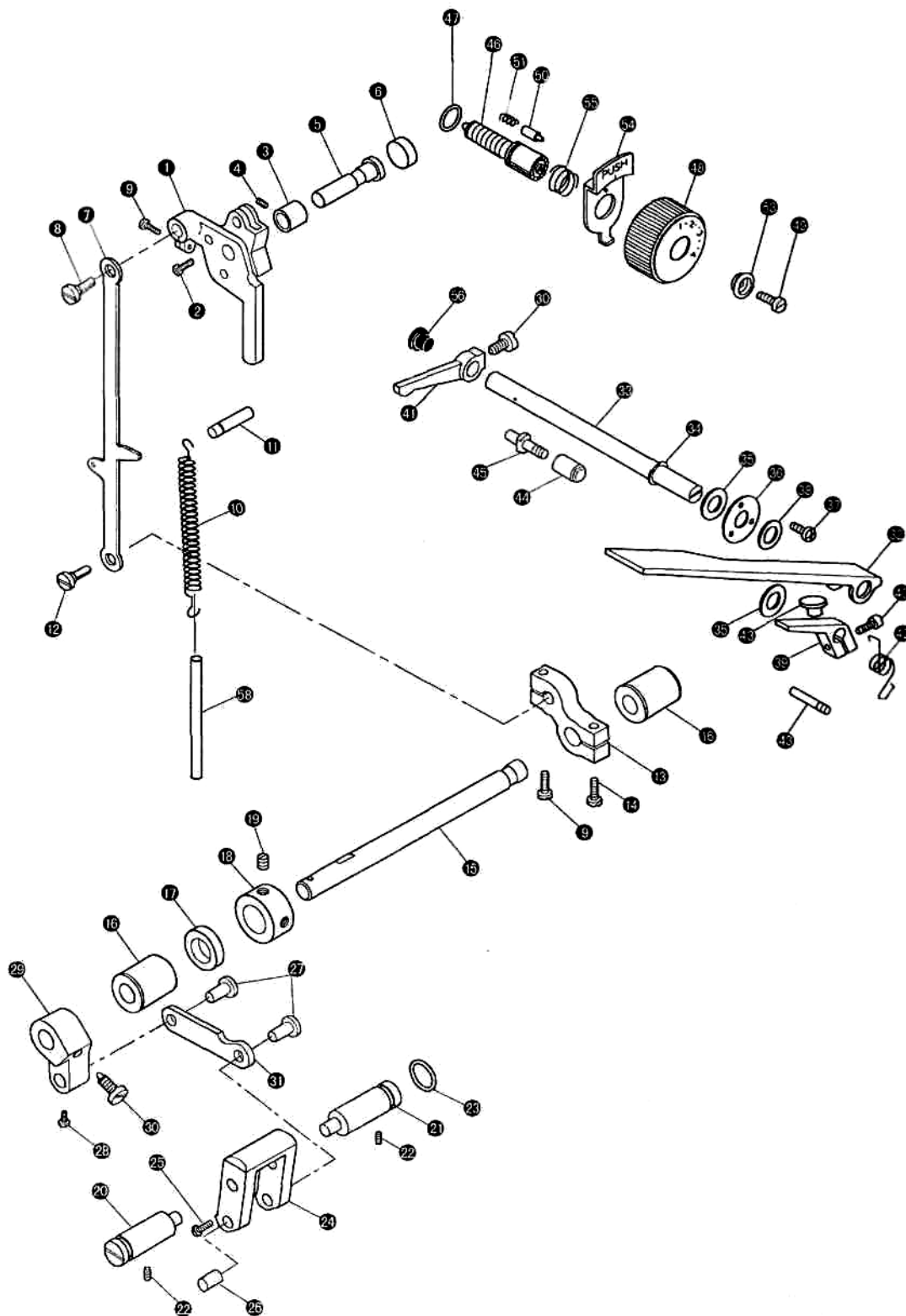
2. NEEDLE BAR AND THREAD TAKE -UP MECHANISM



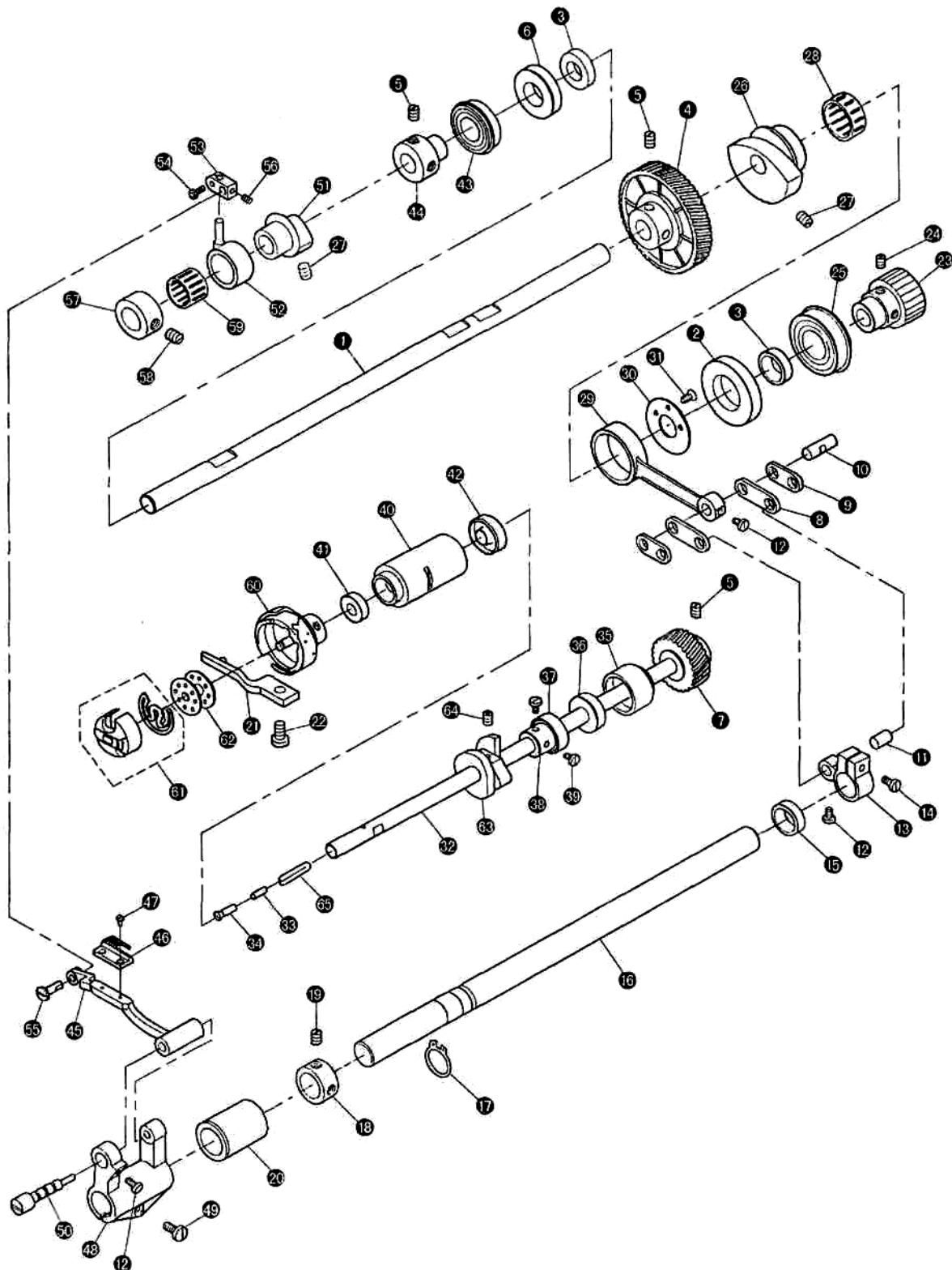
3. PRESSER FOOT MECHANISM



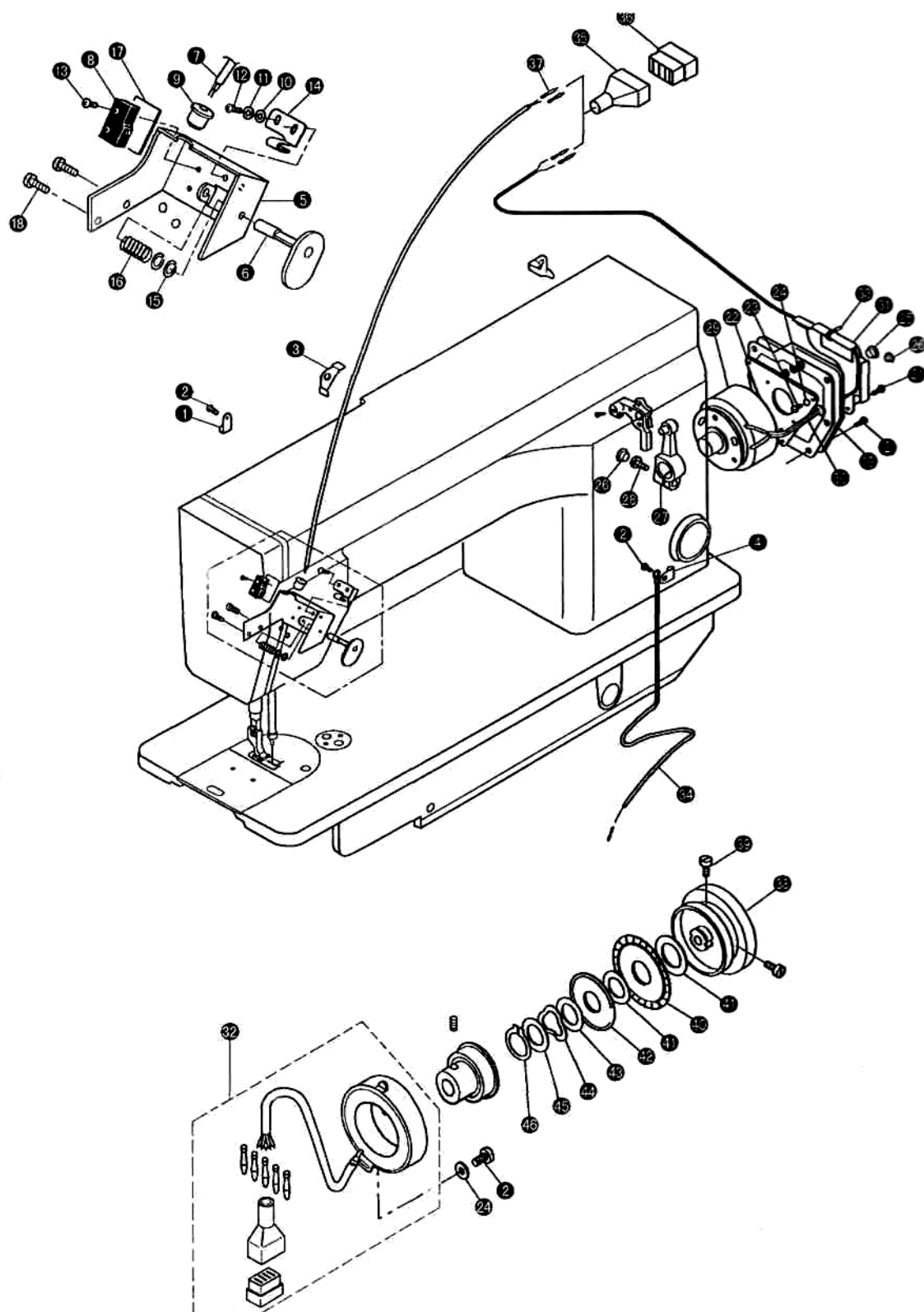
4. STITCH LENGTH REGULATING MECHANISM



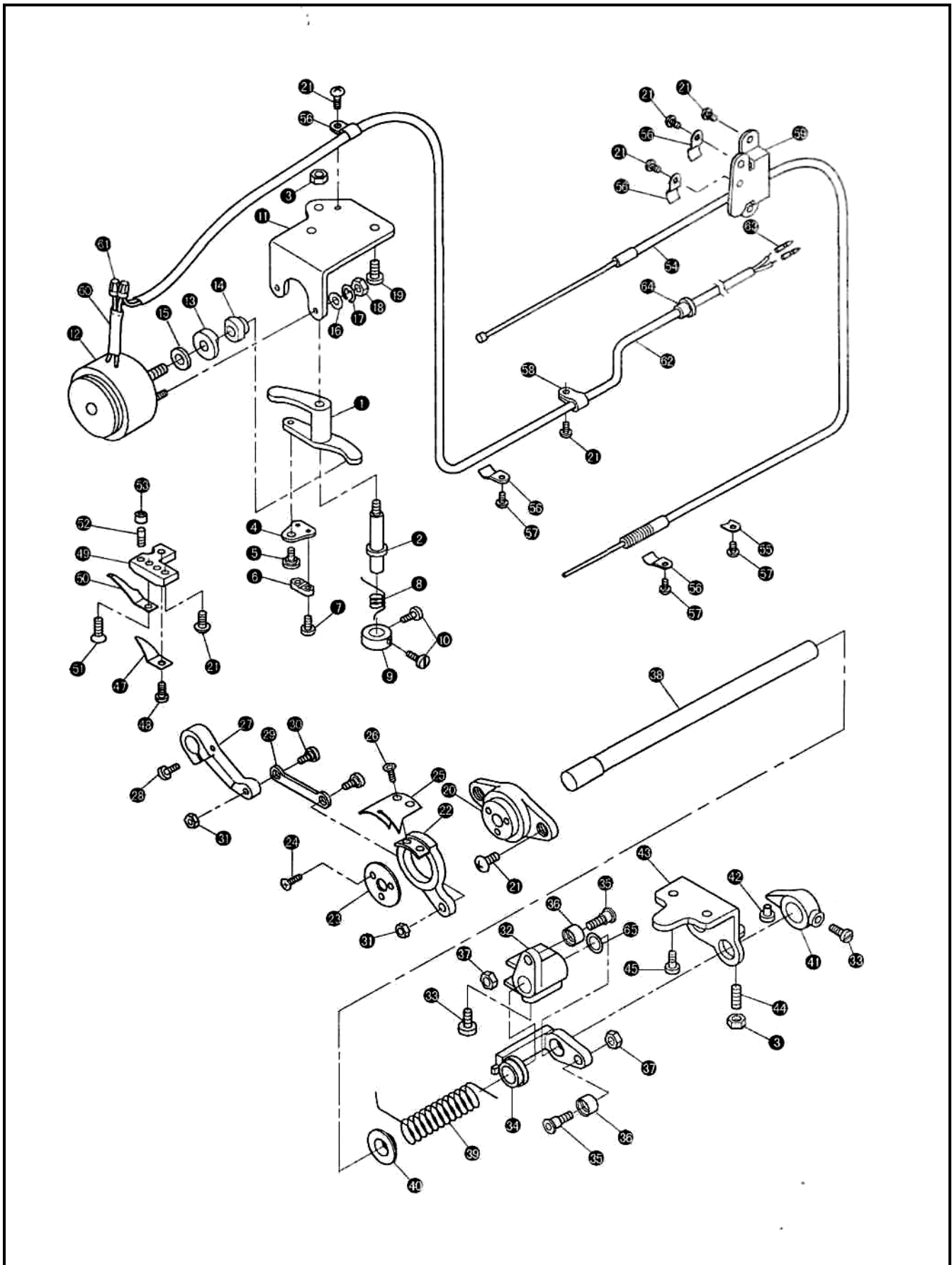
5. FEED AND FEED LIFTING MECHANISM



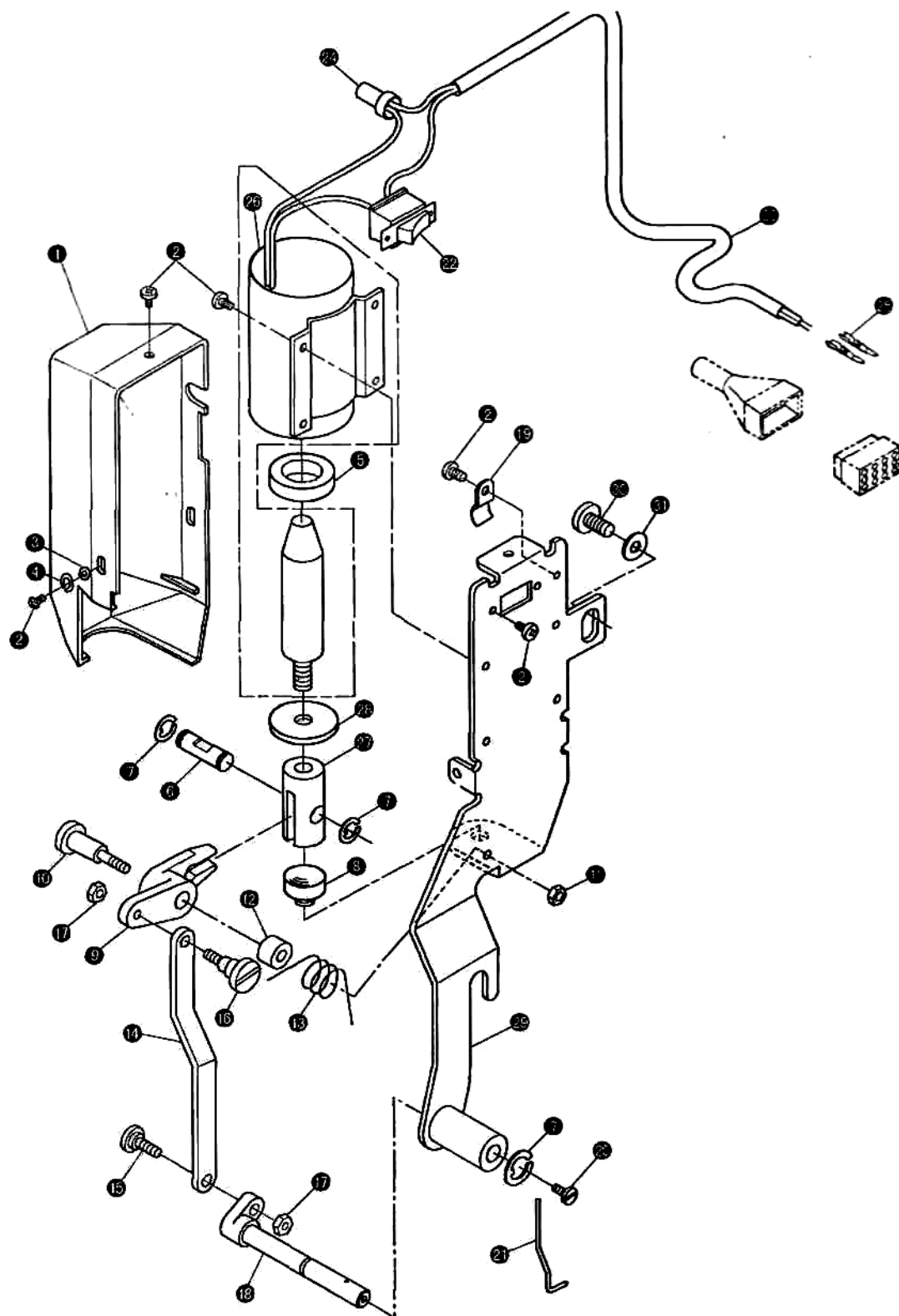
6. TOUCH BACK MECHANISM AND DETECTOR MECHANISM (for lockstitch machine with thread trimmer)



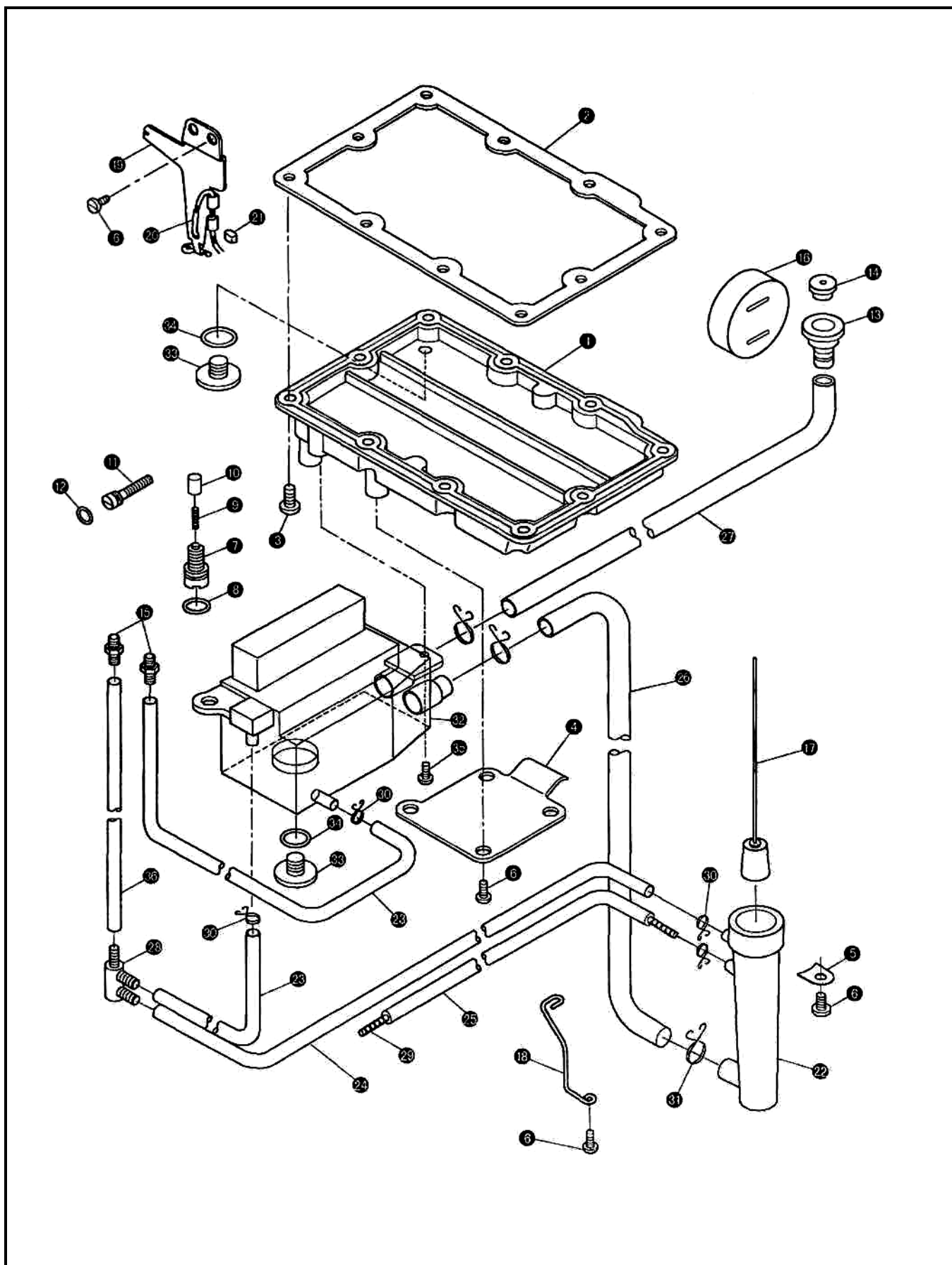
7. KNIFE ACTUATING MECHANISM (for lockstitch machine with thread trimmer)



8. WIPER MECHANISM (for lockstitch machine with thread trimmer)



9. OIL LUBRICATION MECHANISM



10. ACCESSORIES

