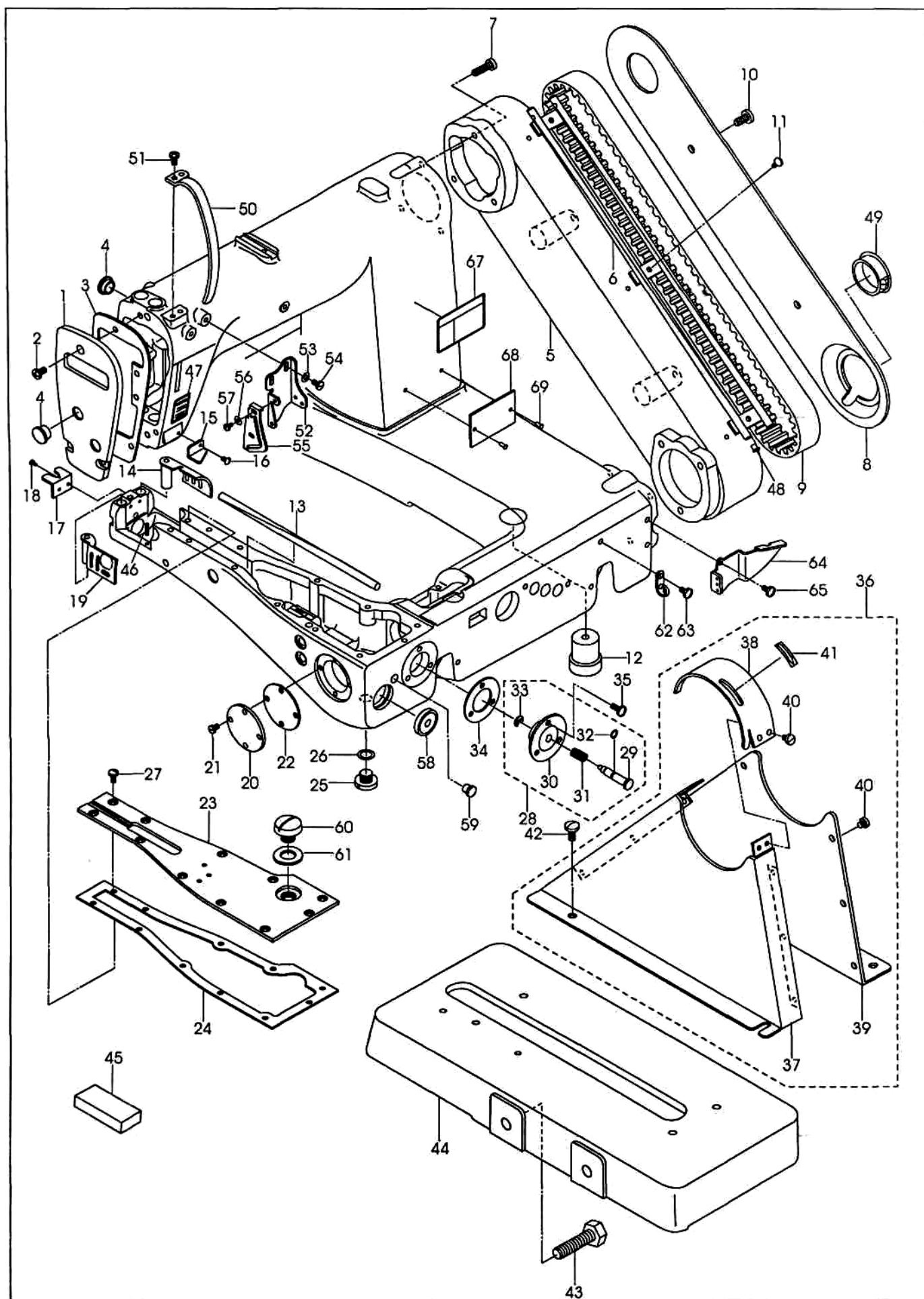
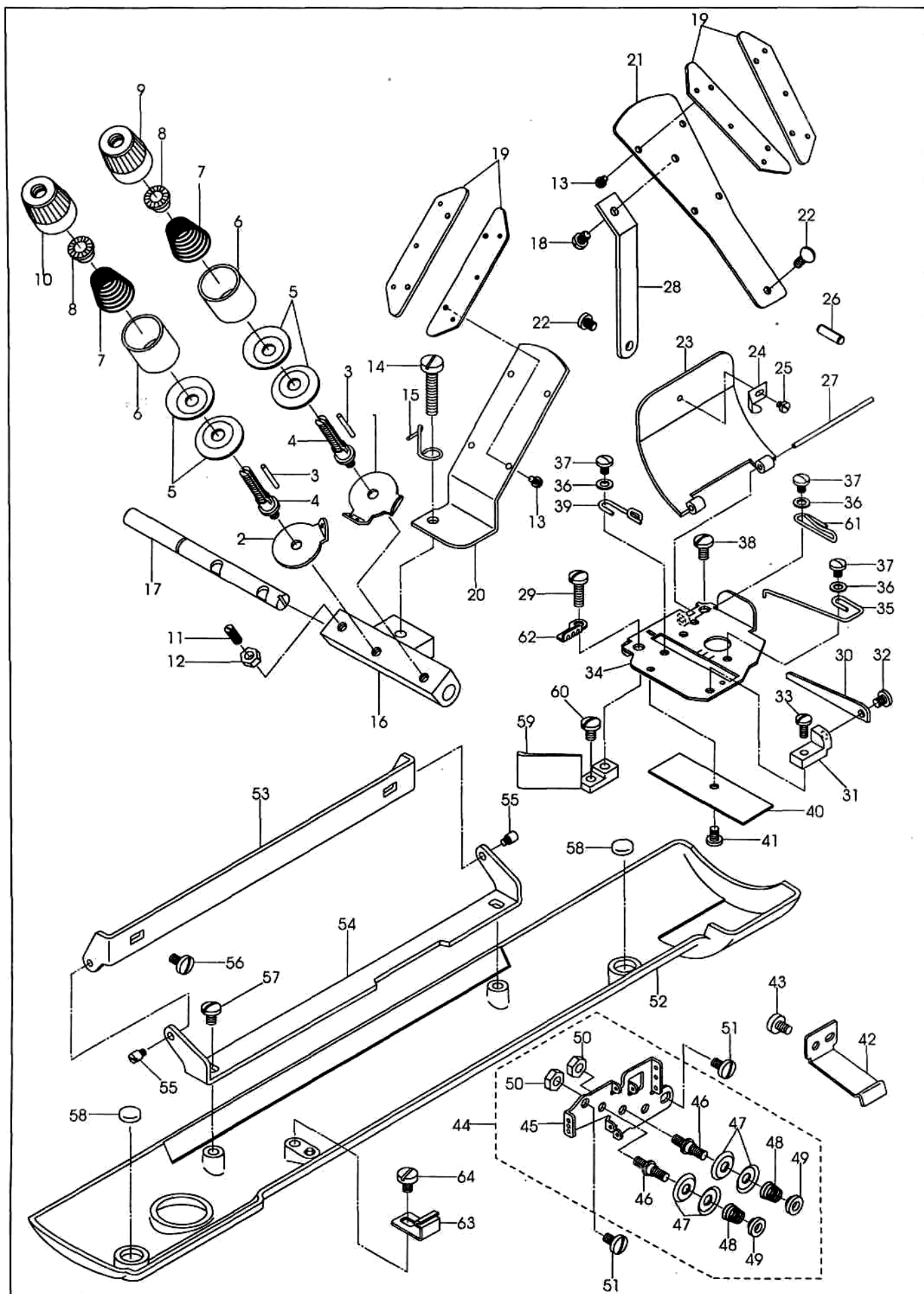


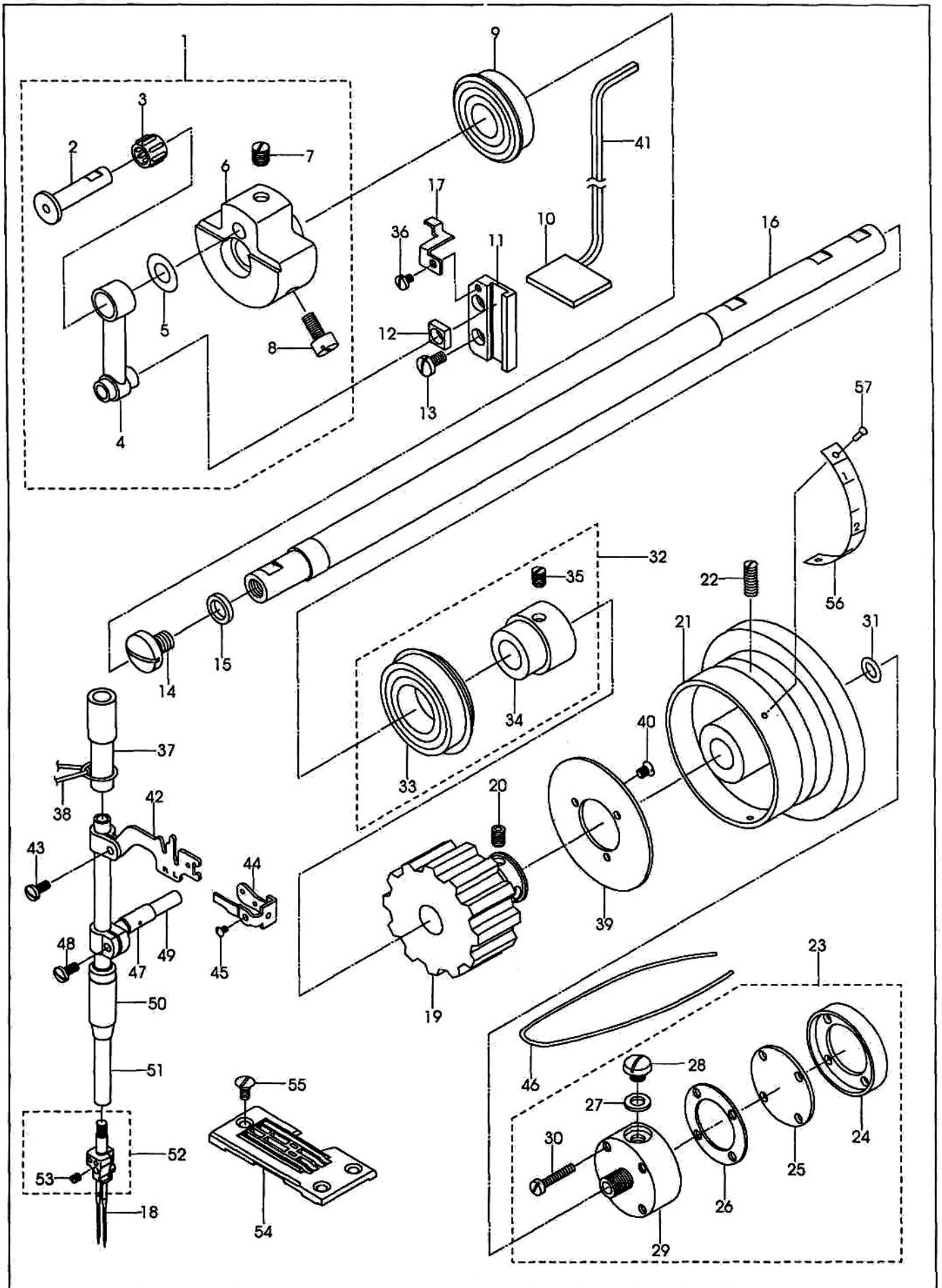
1. FRAME & MISCELLANEOUS COVER COMPONENTS



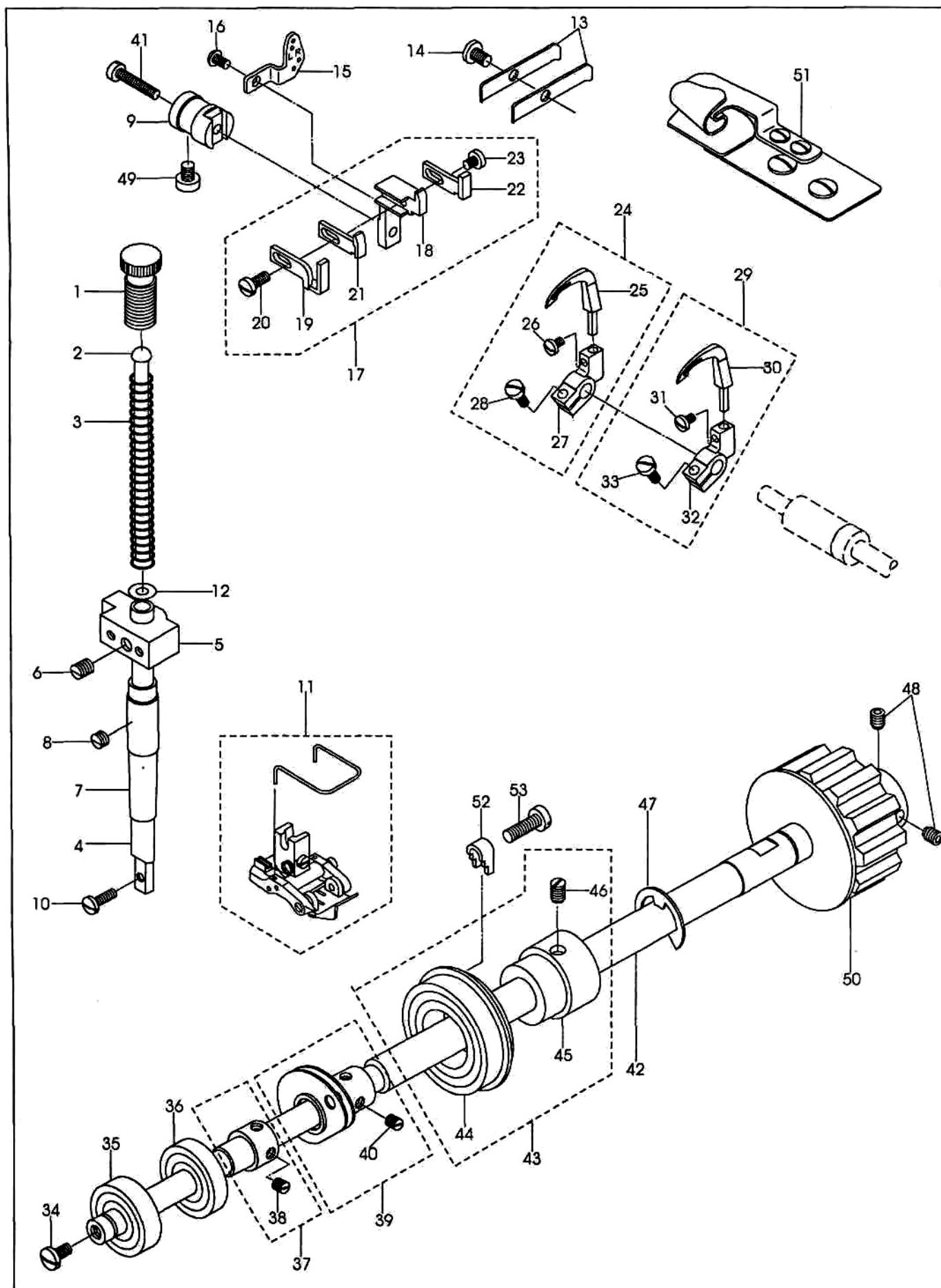
2. LOOPER THREAD GUIDE COMPONENTS



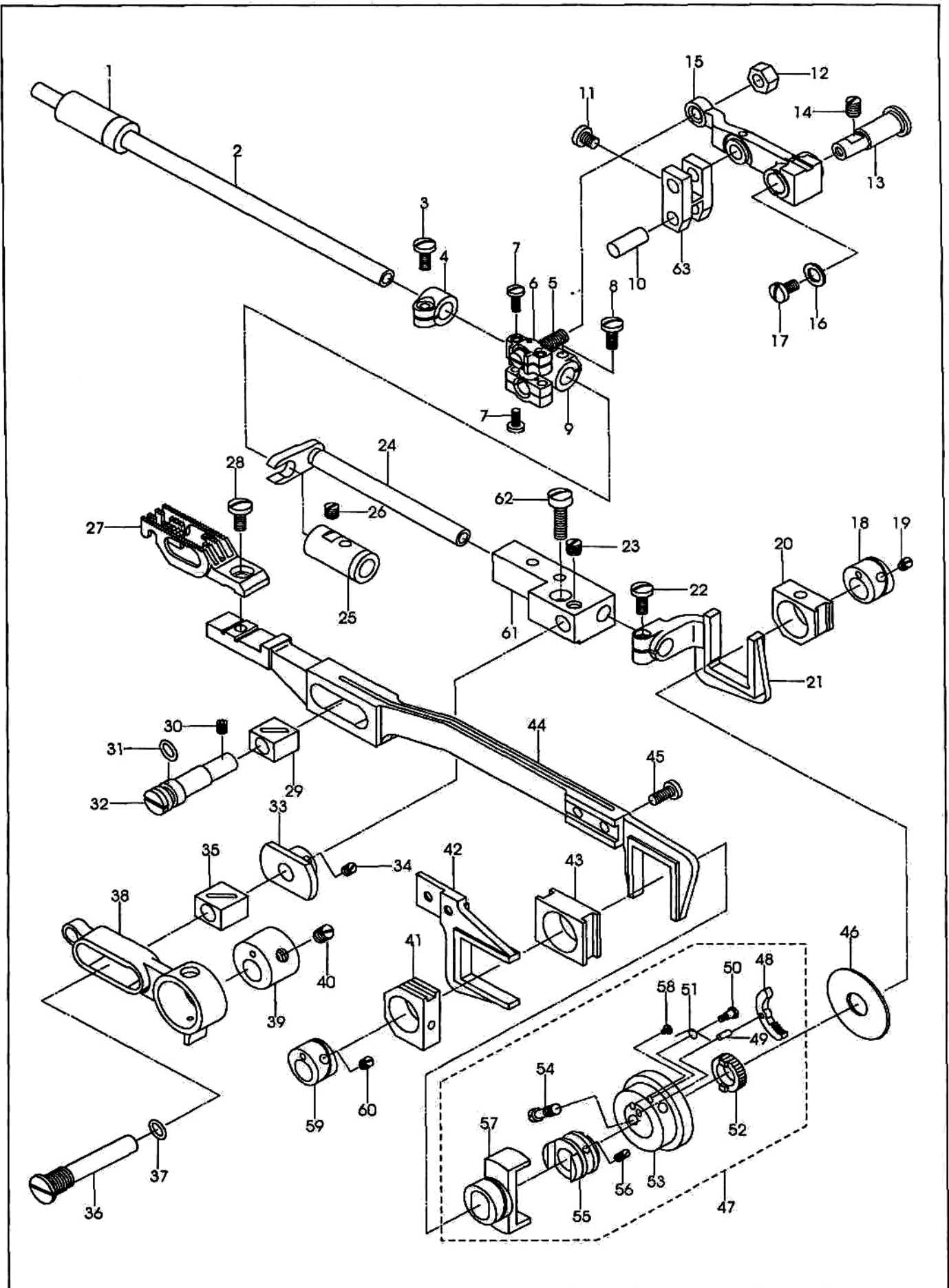
3. NEEDLE BAR & MAIN SHAFT COMPONENTS



4. PRESSER BAR & LOWER SHAFT COMPONENTS



5. FEED MECHANISM COMPONENTS



6. KNEE LIFTER COMPONENTS

